



Department of
Local Government, Sport
and Cultural Industries



PONY CLUB
WESTERN AUSTRALIA

State Coaching School **2024**

Saturday 30 November & Sunday 1 December

Club Development Day

Sunday 1 December

Serpentine Horse & Pony Club

Supported by



Hosted by: Pony Club WA State Coaching Panel

Table of Contents

| | |
|-------------------------------------------|------------------------------|
| EVENT INFORMATION – STATE COACHING SCHOOL | 3 |
| EVENT INFORMATION – CLUB DEVELOPMENT DAY | 4 |
| CONDITIONS RELATING TO THE SCHOOL | 5 |
| REGISTRATION FEE | 5 |
| CATERING | 6 |
| WHAT TO BRING | 7 |
| SPONSORS | 7 |
| NCAS PONY CLUB ACCREDITATION | 8 |
| RULES AND DOCUMENTS | 9 |
| COACH ASSESSMENT – SUNDAY 1 DECEMBER 2024 | 10 |
| Map of Venue | 15 |
| ACCOMMODATION OPTIONS | 16 |
| BILLETED ACCOMMODATION | 17 |
| CAMPING AT SERPENTINE HORSE & PONY CLUB | 17 |
| NELLANDRA HENRY | 18 |
| MINDY SIMPSON | Error! Bookmark not defined. |
| JENNIFER FLEMING | 18 |
| REBECCA THOMAS | 19 |
| TEGAN LUSH | 19 |
| JILL DAVIES | 20 |
| SARAH WEISE | 20 |
| DIANNE OULD | 20 |
| DIANNE COLLEY | 22 |
| NYRELL WILLIAMS - MC | 22 |
| JILL KESSELL | 22 |
| DONNA BLACK | 23 |
| TANYA APPLEBY | 23 |

State Coaching School

Saturday 30 November 2024

Sunday 1 December 2024

Serpentine Horse and Pony Club

EVENT INFORMATION – STATE COACHING SCHOOL

The 2024 State Coaching School, coordinated by the Pony Club WA State Coaching Panel, invites all Pony Club Coaches, Associate Pony Club Members, HorsePower Coaches and any interested parents/riders/volunteers to attend.

This year's event will be held at the Serpentine Horse and Pony Club grounds on Saturday 30 November and Sunday 1 December, 2024. We would like to thank the Serpentine Horse and Pony Club for the kind donation of their grounds and facilities for this event.

The program for 2024 acknowledges feedback received following cancellation of the February 2024 date under the Hot Weather Policy. In addition to our regular specialist coaches, we are excited to include Jennifer Fleming, a Clinical Psychologist as our Keynote Speaker presenting 'Dealing with Difficult People'. Jenn is an experienced horseperson and has coached young riders before embarking on her professional career.

Returning specialist Nellandra Henry will be giving an active demonstration 'Managing the Flight Response' and Rebecca Thomas has prepared an informative and interactive session 'Creating Motivation and Engagement'. Tegan Lush is joining the presentation team for 2024 taking us onto the cross country course with an interactive coaching demonstration.

The Saturday program will be available to Online Participation using a webinar event program. Participants joining online will receive instruction on how to access each presentation. Our online participants will also be asked to interact live and join 'breakout rooms' as part of the interactive components of the webinars.

In recognition of how far many participants travel to attend the State Coaching School, we are offering a discount on the registration fees to those who will be travelling greater than 120km (one way) to reach the Serpentine Horse and Pony Club grounds.

Billeting will also be available where members have made an offer to accommodate our country members. We are compiling a list of those who have offered accommodation, the type of accommodation, distance to Serpentine and if the accommodation includes horses (for demo riders). This information pack also includes information on nearby accommodation providers.

Serpentine Horse & Pony Club have also opened their grounds to camping. Showers and toilets will be available. No catering for the evening meal but local shops and restaurants are available.

Handouts relating to this event will be available on the Pony Club WA website, via the below link: <https://www.ponyclubwa.asn.au/coaches-and-officials/> and at the event. All In Person attendees will receive a Coaches Pack with a special surprise gift inside; due to postage costs, this is not available to Online Participants.

Registration will commence promptly at 8.00 am on Saturday.

Club Development Day

Sunday 1 December 2024

Serpentine Horse and Pony Club

EVENT INFORMATION – CLUB DEVELOPMENT DAY

The State Coaching Panel and Pony Club WA invite all Club Presidents, Treasurers and Committee Members, to attend a half-day Club Development Workshop.

The workshop will be held at Serpentine Horse and Pony Club grounds on Sunday 1 December 2024 and we thank the Serpentine Horse and Pony Club for the kind donation of their grounds and facilities for this event.

The program for the Club Development Day hopes to cover areas of interest to all Pony Clubs and has been designed to be interactive and informative, providing essential information and clarification around various issues that have arisen for Clubs on many occasions.

The sessions will be available for online participation as we realise that our regional clubs may have difficulty in attending. There is a cost for the online attendance to cover equipment and software costs in providing a more quality online experience for attendees with 'breakout rooms' for group participation live at the workshop.

The timing of the workshop will also provide Clubs with valuable information and instruction on setting up their membership offerings on Justgo for the 2025 Year.

Morning tea will be provided.

CONDITIONS RELATING TO THE SCHOOL

The School is open to all coaches and potential coaches who are actively engaged or who intend to be engaged in Pony Club or HorsePower Coaching, and are current members of a Pony Club WA Affiliated Club or registered with HorsePower Australia. This includes parents/associate riders/club volunteers.

Refunds only on prior request as per the Pony Club WA Refunds Policy.

All participants **MUST** be in suitable attire.

(Dress as a coach for a Pony Club rally, with safe and correct footwear, a long sleeved top and a hat).

REGISTRATION FEE

Full Event

| | |
|----------------------------|-----------------------------------------------------------------------------------------------------------------------------------------------------------------------------|
| \$150.00 per person | Full Event (Inc. GST) <i>Includes morning tea and lunch on Saturday, morning tea on Sunday</i> |
| \$100.00 per person | Full Event (Inc. GST) If you are travelling more than 120km (one way) to attend event <i>Includes morning tea and lunch on Saturday, morning tea on Sunday</i> |

Saturday Only

| | |
|----------------------------|----------------------------------------------------------------------------------------------------------------------------------------------------|
| \$110.00 per person | Saturday Only (Inc. GST) <i>Includes morning tea and lunch</i> |
| \$80.00 per person | Saturday Only (Inc. GST) If you are travelling more than 120km (one way) to attend event <i>Includes morning tea and lunch</i> |
| \$110.00 per person | ONLINE Webinars Saturday Only (Inc. GST) |

Sunday Only - Coaching

| | |
|---------------------------|---------------------------------------------------------------------------------------------------------------------------------|
| \$75.00 per person | Sunday Only (Inc. GST) <i>Includes morning tea</i> |
| \$50.00 per person | Sunday Only (Inc. GST) If you are travelling more than 120km (one way) to attend event <i>Includes morning tea</i> |

Sunday Only – Club Development

| | |
|---------------------------|-----------------------------------------------|
| \$Complementary | Sunday Only <i>Includes morning tea</i> |
| \$25.00 per person | ONLINE Webinars Sunday Only (Inc. GST) |

Coach Assessment

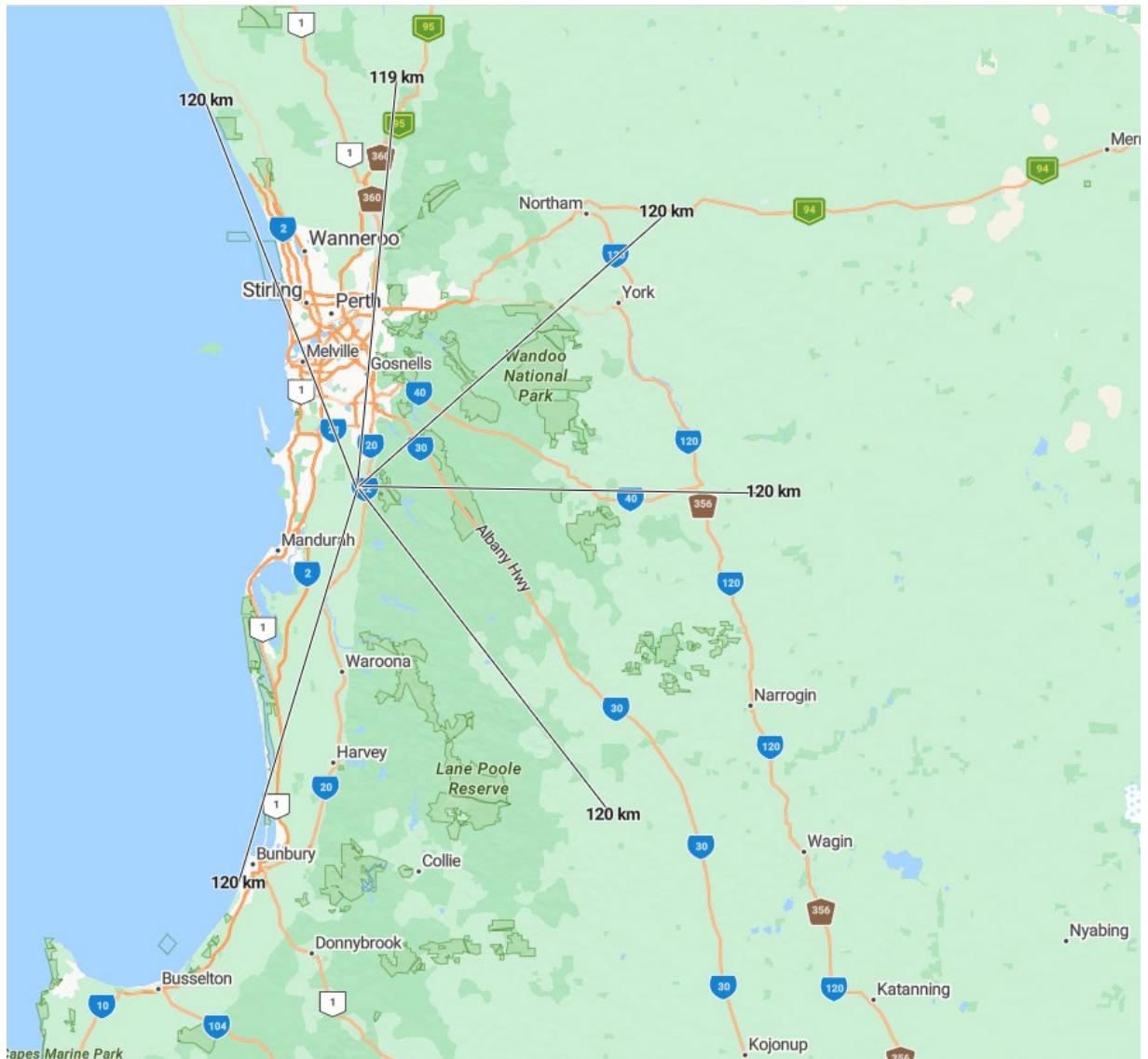
| | |
|----------------------------|-------------------------------------------------------------------------------------------------|
| \$100.00 per person | Sunday Only (inc. GST) You must select EITHER Coach Assessment OR Sunday Only, not both. |
|----------------------------|-------------------------------------------------------------------------------------------------|

Registrations for Coach Assessment MUST be received by Friday 9 November 2024.

CATERING

Morning tea and lunch will be provided on the Saturday and morning tea on the Sunday.

Serpentine Horse and Pony Club will be providing the catering. You will be asked to specify your lunch order on registration. The canteen will be available for purchases of Chocolates, Chips, Lollies and Powerade



WHAT TO BRING

- **Refillable Water Bottle**

Pony Club WA have recently been converted to an ecofriendly water supply therefore, we encourage you to bring a refillable water bottle to fill up at the water station provided. No bottled water will be sold over the weekend.

- **Outdoor Chair**

You are encouraged to bring a chair (camp chair) to sit on during outdoor presentations.

- **Coaching Manuals**

Coaching Manuals are available to purchase via Justgo SHOP.

- **Merchandise**

Various coaching materials, books and other information will be available to purchase on the day.

- **Outdoor protection**

As part of this event will be presented outdoors, we encourage you to wear a hat and come prepared with sunscreen. Remember to Slip, Slap, Slop!

SPONSORS

A huge thank you goes to Department of Local Government, Sport and Cultural Industries, Lotterywest, Thompson & Redwood and WA Farrier Association and Equisk Rider Aids for their support of our event.



Department of
**Local Government, Sport
and Cultural Industries**



Also we would like to recognise our Association Sponsors for their contribution to the State Coaching School for 2024.

Coaching Accreditations

BECOME A NCAS ACCREDITED COACH TODAY!!

Pony Club WA encourages and supports coaches and prospective coaches to gain Pony Club coaching qualifications as part of the National Coaching Accreditation Scheme (NCAS).

NCAS PONY CLUB ACCREDITATION

The Pony Club Australia (PCA) course structure and delivery methods make the system very attractive and affordable for coaches and prospective coaches. Prospective coaches from the absolute beginner to the more experienced can work through the course at their own pace depending on their level of experience and access to assistance. The main features of the course structure are:

- Flexible Course Delivery – work at your own pace, work with a mentor, attend workshops and clinics etc
- Competency Based Assessment including by video
- Recognition of Current Competency – people gain skills and knowledge in many ways, by formal training or life and work experience.
- Senior First Aid Certificate is not required but does carry points when updating your accreditation.

PCA NCAS ACCREDITATIONS

There are currently 3 levels of nationally recognized qualification:

- **PCANCAS Foundation Coach** (National Accreditation) – This entry level qualification is perfect for those coaches and parent to learn the basics of horse safety and riding to help at rally days.
- **PCANCAS Preliminary Coach** (National Accreditation) – Set at the level of D* Certificate syllabus for riders, this is also a pre-requisite for Level 1.

- **PCANCAS Level 1 Coach** (National Accreditation)– The most advanced coaching qualification, set up to the C*/B Certificate rider syllabus level.
- **PCANCAS Level 1 Mounted Games Specialist** – coaches must have Preliminary pony Club Coach qualification and complete Modules 1,2, Module 3 (3.1 to 3.5 only) of Level 1.
- **PCANCAS Level 2** is currently under consideration (subject to funding) for development.

Register your interest in NCAS Foundation, Preliminary or Level 1 Coach or Gear Checking Training: [Pony Club Western Australia \(ponyclubwa.asn.au\)](http://ponyclubwa.asn.au)

RULES AND DOCUMENTS

[PCA NCAS Foundation Coaching guidelines for PCWA website February 2024 Updated](#)

[PCA NCAS Preliminary Coaching PCANCAS Preliminary Coaching Guidelines](#)

[PCA NCAS Level 1 Coaching guidelines for PCWA website February 2024d](#)

[Pony Club WA Prelim/Level 1 Coaching Re-Accreditation Application](#)

[PCA NCAS Application for Assessment & Accreditation](#)

Reconsidered Prior Learning (RPL)

EA Coaches to NCAS PC Level 1 Coaching Accreditation –

[PCA NCAS Requirement and Coaching Recognition of Prior Learning Policy](#)

[Pony Club WA 2021 Pathway for EA coaches to NCAS PC Level 1 Coach](#)

[Application for EA Coach to NCAS PC Level 1 Coaching Accreditation](#)

Find out further information on our coaching affiliation and resources here:

[Coaches and Sport Officials | Pony Club Western Australia \(ponyclubwa.asn.au\)](#)

COACH ASSESSMENT – SUNDAY 1 DECEMBER 2024

The State Coaching Panel will be offering the opportunity for Coaches wanting to complete their Practical Assessment, to be assessed on the Sunday of the State Coaching School.

This opportunity is offered on a limited, first registered basis. There is a separate cost for the assessment of \$100 inc GST, paid on registration. You will be unable to attend the Sunday Only sessions at the State Coaching School if you are being assessed.

Registrations for Coach Assessment MUST be received by Friday 9 November 2024.



PCANCAS COACHING ACCREDITATION






PRE-REQUISITES & ASSESSMENT REQUIREMENTS

| Foundation | Preliminary | Level 1 |
|---------------------------------------------------------------------------------------------------------------------------------------------------------------------------------------------------------------------------------------------------------|---------------------------------------------------------------------------------------------------------------------------------------------------------------------------------------------------------------------------------------------------------|---------------------------------------------------------------------------------------------------------------------------------------------------------------------------------------------------------------------------------------------------------|
| Financial Member of a Club, Accredited Riding Centre or State | Financial Member of a Club, Accredited Riding Centre or State | Financial Member of a Club, Accredited Riding Centre or State |
| Purchase Foundation Coaching Manual from JustGo Shop | Purchase Preliminary Coaching Manual from JustGo Shop | Pre-requisite PCANCAS Preliminary Coaching Accreditation |
| Complete the Workbook | Download & complete the Workbook | Purchase Level 1 Coaching Manual from JustGo Shop |
| Have a current Working with Children's Check | Have a current Working with Children's Check | Have a current Working with Children's Check |
| Have completed the following on line courses <ul style="list-style-type: none"> • ASC Community Coaching Essentials • ASC Safeguarding Children and Young People in Sport Induction • ASC National Integrity Framework | Have completed the following on line courses <ul style="list-style-type: none"> • ASC Community Coaching Essentials • ASC Safeguarding Children and Young People in Sport Induction • ASC National Integrity Framework | Have completed the following on line courses <ul style="list-style-type: none"> • ASC Community Coaching Essentials • ASC Safeguarding Children and Young People in Sport Induction • ASC National Integrity Framework |
| Completed PCA Gear Checker Accreditation | Completed PCA Gear Checker Accreditation | Complete the PCA Inclusive Coaching Webinar and assessment |
| A Mentor – to sign off 10 hours of mentored coaching | A Mentor – to sign off 10 hours of mentored coaching | A Mentor – to sign off 12 hours of mentored coaching |
| Download PCA Syllabus of Instruction & Purchase Rider Manuals (E & D) optional | Download PCA Syllabus of Instruction & Purchase PCA Rider Manuals (E, D & D*) - optional | Download PCA Syllabus of Instruction & Purchase PCA Rider Manuals (C, C*/K & B) - optional |
| View PCA online Foundation Coach Webinars - optional | Complete Preliminary Coaching Moodle via the PCA Academy - optional | Sign up for access to the PCA Coaching Resources Library - optional |
| Read understand & sign the Coaches Code of Conduct | Read understand & sign the Coaches Code of Conduct | Read understand & sign the Coaches Code of Conduct |
| Complete Pony Club WA Application to be assessed | Complete Pony Club WA Application to be assessed | Complete Pony Club WA Application to be assessed |
| Practical Assessment 2 x 30 minute lessons | Practical Assessment 4 x 30 minute lessons | Complete Online Written Tests |
| | | Practical Assessment 4 x 45 minute lessons |

Schedule of Events – Saturday

| | | | |
|----------|-----------------------------------------------------------------------------------------------------------------------------------------------------------------------------------------------------------------------------------------------------------------------------------------------------------------------------------------------------------------------------------------------------------------------------------------------------------------------------------------------------------------------------------------------------------------------------------------------------|---------------------------------------------------------------------------------------------------------------------------|---------------------------------------------------------------------------------------------|
| 8.00 AM | Registration | Pony Club WA State Coaching Panel & Pony Club WA | |
| 8.20 AM | Welcome and Overview of the Day's Program |  | SALLY WISEMAN <i>Pony Club Australia</i> Participation and Development Manager |
| 8.30 AM | Show Jumping - Managing the Flight Response (Rushing/Napping/Refusing) Using Equisk Shirts – Event Sponsor | Nellandra Henry PCANCAS Level 1 EA Level 2 Jumping Trainer/Assessor Coach Educator Outdoors - Grass |  |
| 9.30 AM | Keynote Speaker Dealing with Difficult People Webinar for Online Participants | Jennifer Fleming Clinical Psychologist Fleming Psychology |  |
| 10.30 AM | MORNING TEA | | |
| 10.45 AM | Engagement & Motivation in Learning How rider preferences, learning style and communication preferences can influence the level of engagement. Practical Implications: <ul style="list-style-type: none">Delivering content with motivation and engagementTools and specific activities relevant to syllabus content Break Out Sessions <ul style="list-style-type: none">Syllabus topics will be used for 'break out sessions'Discussion, collaboration and sharing of techniques/skills Summary and Review Webinar for Online Participants |  | Rebecca Thomas PCANCAS Level 1 EA Level 2 Coach Educator |
| 12:10 PM | Gear Checking Update Webinar for Online Participants |  | Dianne Ould State Gear Checking Co-ordinator |
| 12.20 PM | LUNCH | NETWORKING | |
| 1 PM | “Chew to Poo” – The Digestive System Webinar for Online Participants |  | Jill Davies Equine Nutritionist Thompson & Redwood |
| 1:45 PM | Preparing for the Farrier Practical Coaching ideas for Pony Club Webinar for Online Participants | West Australian Farriers Association |  |
| 2.45 PM | AFTERNOON TEA | | |
| 3.00 PM | Running a Tetrathlon at your Club Webinar for Online Participants |  | Sarah Weise Pony Club WA Tetrathlon Committee |
| 3.30 PM | Sharing Our Experience WA International Tetrathlon Riders Webinar for Online Participants |  | |
| 4:15 PM | FINISH | | |

Schedule of Events – Sunday – Coaching

| | | | |
|----------|------------------------------------------------------------------------------------------------------------------------------|-----------------------------------------------------------------------------------------------------------------------------------------------------------------------------------------------------------------------------------------------|------------------------------------------------------------------------------------------|
| 8.00 AM | Registration | Pony Club WA State Coaching Panel + Pony Club WA Staff | |
| 8.20 AM | Welcome and Overview of the Day's Program | Club House | |
| 8.30 AM | Managing Mixed Ages and Proficiency Levels in Flatwork with Arena Commands <i>Outdoors Practical Demonstration</i> |  | Dianne Colley PCANCAS Level 1 EA General Level 1 Coach Educator/Assessor |
| 9.30 AM | Coaching Cross Country <i>Outdoors Practical Demonstration</i> |  | Tegan Lush Specialist Presenter <i>On XC Course</i> |
| 10.30 AM | MORNING TEA | | |
| 10.45 AM | Incorporating Groundwork in your Flatwork Lesson <i>Outdoors Practical Demonstration</i> |  | Rebecca Thomas PCANCAS Level 1 EA Level 2 Coach Educator |
| 11.15 AM | DLGSC Supporting Pony Club WA Regional Grant Presentation Feedback / Q & A |  Department of Local Government, Sport and Cultural Industries  | |
| 12:00PM | THANK YOU AND FAREWELL | Sport and Recreation Sport Development and Engagement | |

Schedule of Events – Sunday – Club Development

| | | |
|----------|--------------------------------------------------------------------------------------------------------------------------------------------------------------------------------------------------------------------------------------------------------------------------------------------------------------------------|---------------------------------------------------------------------------------------------------------------------------------------------------------------------------------------------------------------------------------------------------------------------------------|
| 8.00 AM | Registration | Pony Club WA State Coaching Panel + Pony Club WA Staff |
| 8.20 AM | Welcome and Overview of the Day's Program | Club House |
| 8.30 AM | Game Plan <i>Supporting Clubs and Sports to Build Capability</i> Allows sporting clubs of all sizes to get insights into their current capability in key areas of club administration, then supports ongoing club development with a suite of tools and resources <i>Webinar for Online Participants</i> |   |
| 9.00AM | Club Governance <i>Running your AGM, Financial Statements, What is in your Constitution</i> <i>Committee Roles and Responsibilities</i> <i>Webinar for Online Participants</i> |  Tanya Appleby General Manager Pony Club WA |
| 9.30 AM | Rally Day – Planning and Scheduling <i>Securing and Maintaining Coaches, Flexibility on Rally Day, Covering the Syllabus, Certificate Assessments, Set Up and Pack away Strategies</i> <i>Webinar for Online Participants</i> |  Jill Kessell Chief Instructor  Donna Black Rally Co-ordinator Wallangarra RPC |
| 10.30 AM | MORNING TEA | |
| 10.45 AM | Public Liability Pony Club Insurance <i>Overview of the Pony Club Australian Insurance Coverage for clubs, coaches, riders, volunteers, rallies and events.</i> <i>Webinar for Online Participants</i> | Allira Gould   |
| 11.15AM | True Sport <i>Good sideline behaviour</i> <i>Promoting a positive culture, respect and fair play from the sidelines.</i> <i>Webinar for Online Participants</i> |  |
| | | Presented by Sport West |
| 11.45 AM | DLGSC Supporting Pony Club WA Regional Grant Presentation Feedback / Q & A |  Department of Local Government, Sport and Cultural Industries  |
| | | Sport and Recreation Sport Development and Engagement |
| 12:00PM | THANK YOU AND FAREWELL | |

Map of Venue



ACCOMMODATION OPTIONS



Tasman Holiday Parks – South West Highway, Serpentine

CABINS - prices range from \$180 to \$280 per night – please confirm with venue

Budget Cabin (Shared Bathroom)

Sleep up to 2 people Free Wifi Onsite Parking

Basic Ensuite Cabin (Studio)

Sleep up to 2 people Free Wifi Onsite Parking

Cosy Cabin (2BR)

Sleep up to 4 people Free Wifi Onsite Parking

Cosy Cabin (1BR)

Sleep up to 4 people Free Wifi Onsite Parking

One Bedroom Holiday Home

Sleep up to 2 people Free Wifi Onsite Parking

Two Bedroom Holiday Home

Sleep up to 4 people Free Wifi Onsite Parking

CARAVANS & CAMPING – pricing currently \$75.00 per night – please confirm with venue

Amenities Free Wifi Onsite Parking

Powered Site (Slab/Gravel)

Sleep up to 6 people Free Wifi Amenities Onsite Parking

Powered Site (Grass)

Sleep up to 4 people Free Wifi Amenities Onsite Parking

Off-grid Tent Only Site

Sleep up to 4 people Free Wifi Amenities Onsite Parking

GOLDEN PONDS

355 Mundijong Road Baldivis

Ph: 08 9524 1911

goldenponds@westnet.com.au

Golden Ponds is set on 100-acres of picturesque lakes and landscaped gardens

All accommodation enquires by phone between the hours of 9am – 12pm or 2pm to 4:30pm.

Accommodation – prices range from \$140 to \$200 per night – please confirm with venue

Our accommodation includes 2 Bedroom Brick Apartments (2 x have Acrod Facilities), plus 2 Bedroom Brick Cottages and 1 Bedroom Self-Contained Chalets.

Two Bedroom Apartments (1 Queen sized and 2 King Singles)

Two Bedroom Cottages

One Bedroom Chalets

RV Park / Caravan Park– prices range from \$31 to \$47 per night – please confirm with venue

We also have large drive through Caravan or RV Powered and Non-Powered Sites, with access to a large Camp kitchen, Recreation Room, Laundry Facilities and Ablution Block.

Powered Sites

Unpowered Sites

Caravan Park Fees based on 2 guests

Guests 5 years old and under are free

\$11.00 per night each extra guest

\$66.00 weekly each extra guest

BILLETED ACCOMMODATION

Expression of Interest – Billet a Regional Coach to attend the State Coaching School

State Coaching Panel is looking for Pony Club WA members/families living near Serpentine Horse & Pony Club who would be happy to host Regional Coaches in their home while attending the State Coaching School.

Not only is billeting a great way to give back to the sport you love, but it can also be a rewarding experience. If you have a spare bedroom and would be happy to host a Regional Coach to attend the event, please email your contact details and information about the accommodation to: coaching@ponyclubwa.asn.au

A register of Billeted Accommodation will be maintained and Regional Coaches interested in accessing this accommodation option will be put directly in touch with those happy to host.

CAMPING AT SERPENTINE HORSE & PONY CLUB

Serpentine Horse & Pony Club has graciously offered to host campers on their grounds for the State Coaching School. The toilets and showers at the Club Rooms will be made available to campers. No evening meal catering has been provided however, it is only a short drive to local shops and restaurants if you need to pick up a meal.

If you are bringing a horse, there are a limited number of yards available for use.

We ask that if you are camping, or using the grounds as a demo rider, please ensure you leave the grounds as you found them, picking up all hay, horse poo and any other rubbish.

Presenter Profiles



NELLANDRA HENRY

Nellandra Henry is a full-time accredited EA Level 2 Jumping Coach and a Coach Educator in Western Australia. She is also a level 1 General Coach and a Skill-Specific Trainer/Assessor. She lives and works at Benell Park in Gidgegannup with her partner Ben, who also rides and competes in showjumping

Nell started her coaching career at the Claremont Therapeutic Riding Centre. The Centre caters for riders of all abilities and has had many representatives at the Special Olympics and on the Para Squads. "I feel this has given me a unique insight to coaching and being able to work with many different levels of riders. I love being part of each rider's journey, progression and partnership with their horse, whether it be a 4* eventer, GP jumper or a young pony club member."

"I have been privileged over the years to learn from so many talented coaches. I want to pay it forward and pass on what I have learned as a rider and coach to others. To me, it is critically important for young riders to receive good coaching from the beginning. It makes everyone's life easier, better and smarter for young riders begin with a foundation of mutual trust, respect and correct skills". As a coach educator, she sees this as helping everyone around the state be able to access good coaching." I believe there should be easier access to coach educators for Jumping in WA and not have to rely on interstate assessors."

Nell is passionate about coaching "I provide quality training for riders and their horses, with the aim to help them achieve their goals – no matter what size. I conduct clinics (on-and-off site) and provide one-on-one and group coaching lessons to develop the horse and student's horsemanship."

"Each and every day I wake up feeling so incredibly fortunate to be able to do what I love in a place that I love".

JENNIFER FLEMING



Jennifer Fleming has a Master of Applied Psychology (clinical) and is a senior clinical psychologist at Ramsay Health and owner of private practice Fleming Psychology. She is a member of the Institute of Clinical Psychologists and of the Australasian Society for Traumatic Stress Studies.

Jennifer started riding horses at age 7, joined Gosnells Pony Club around age 15 with her thoroughbred Bob, and competed in pony club events until leaving Perth to work in agriculture with her two horses in 2004. Later, she reluctantly sold her horses to commence her psychology degree. Her two children have been introduced to horseriding through family members who still ride, leaving Jennifer to enjoy all the fun parts of horses with none of the work or expenses!

As a clinical psychologist, Jennifer works with extremely challenging individuals with complex mental health difficulties. She has a grounded, warm and caring approach that validates an individual's experiences whilst maintaining firm boundaries around expectations and needs. Over a decade in mental health settings has shaped her experience in working with difficult people – not always getting it right – but learning and reflecting on what works, and also what doesn't.

REBECCA THOMAS

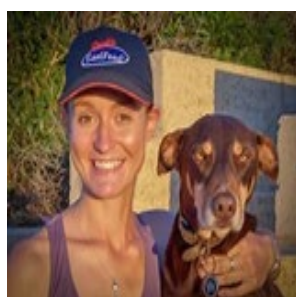


Rebecca Thomas is an accredited EA Level 2 General Coach and Coach Educator and has been actively involved in the equestrian community for many years. Rebecca is the current Chair of the EWA Coaching Committee.

Rebecca started riding at a young age and has been a dedicated member of the Walliston Riding and Pony Club since she was 7 years old where she is Chief Coach. She has a passion for eventing and has successfully competed at 3-star level with her horse, DVZ Debonaire.

In addition to her coaching, Rebecca has a background in education and lectures at Murdoch University. She spent 22 years in the police force, including a role as the head trainer at the WA Mounted Police. She is also involved in mentoring and training new coaches, helping them develop their skills and knowledge.

TEGAN LUSH



Tegan was born in WA and grew up galloping around the bush on her pony in a stock saddle pretending to be the Man from Snowy River. At age eight she went to her first gymkhana, (still in the stock saddle) winning the Champion local rider. This activated the competitive side in Tegan! Tegan began pony club with local instructor Sharon Jarvis.

Tegan did her first ever one day event when at 13 on her Arabian pony and after years of eliminations and trying her hand at other equestrian pursuits such as hacking, dressage and barrel racing it was decided that she needed a horse and so her first competition horse was purchased. He was named Fearful Symmetry, a poem about a tiger and that's when Tegan's distinctive Orange and Black colours were born!

Tegan shares a coaching experience: *'I had been blessed with a great bunch of kids eager to learn, with parents just as eager to gain more knowledge. What did I teach that many kids you ask? I passed on something I learnt from Lucinda Green – the ELBOW. E for Engine, L for Line, B for Balance and OW if you get the above wrong! We spent Monday working on Engines, using exercises from Jon Pitts on controlling our seat bones to influence the horse. Tuesday was Lines, doing angles and curves and S bends and Wednesday was Balance, lots of 2-point trotting, no stirrups, one handed riding etc. Thankfully no one had any major OW's!'*

JILL DAVIES



Jill Davies is an Equine Nutritionist who has been involved with horses all her life. Having managed and ridden for an international eventing yard in the USA she then completed her Bachelor in Equine Science from the University of Lincoln. While studying at Curtin University Masters by Research (MSc) research was on use of Proanthocyanidins for gastric health in the competition horse.

Jill taught Equine Nutrition & Equine Exercise Physiology at Curtin University for over seven years and was a sessional lecturer for the Animal & Veterinary Sciences at Murdoch University. Jill now operates her own independent equine nutrition business, Feed Your Steed, operating out of the Lower Southwest of WA.

SARAH WEISE



My husband and I farm on a mixed grain and sheep property in Narrogin with my input mostly in the sheep husbandry and financial management parts of the business. Prior to children and farming I completed a PhD in Animal Science and managed the Sheep Meat Research Program for the Department of Agriculture.

Our family have been members of Dryandra Pony Club for 16 years and my three, now adult children all still actively represent their Club, Zone, and State at Pony Club events. I have been President or Treasurer of Dryandra Pony Club and the Central Zone for the last 13 years and a member of the State and National Tetrathlon Committees for the last 5 years, contributing to event management and rule development at all levels of pony club. I coach at Dryandra regularly and have NCAS prelim coach and gear check accreditation.

I grew up in the Hills and have ridden all my life, attending Gidgegannup and then Eastern Hills Pony Club competing to 105cm. I have competed in triathlon and multisport events for 25 years enjoying anything from a sprint distance triathlon to a 10 hour multisport race or an 80km ultra marathon. My favourite event is the Blackwood Marathon (12km run, 8km paddle, 1km swim, 16km horse, 20km bike) which I have won 22 times. Most of my riding is keeping the horses in work so the kids can still ride while living in Perth and occasionally joining in myself for a Clinic, Tetrathlon, Show Jump competition if we are down to one child available on that weekend. I also play hockey and will play for Australia in the Masters World Cup in Auckland this November.

DIANNE OULD



In 2014 the State Coaching Panel put out a call for members who would like to join a panel that would help in bringing gear checking more in to focus, both by researching new equipment and educating members in gear.

I put my hand up and over the years have become passionate about the education of members and getting more accredited gear checkers out there. Enjoying my role as

Presenter and Assessor and next year will take over as Chair of the Gear Checking panel and I look forward to this challenge.



DIANNE COLLEY

Dianne has always had a special place for horses in her life since the age of 4 years but did not actually have any horses until she was 14 years old. She accomplished all her certificates up to and including B and then did her A certificate here in Perth when she came over for a holiday. Now here, she is 42 years later.

She then began coaching at Pony Club from the age of 19 years and completed her EA Level 1 and 2 Coaching. Dianne loves coaching at Pony Club to give back what she has learnt and to see the children grow and improve with their horses/ponies.

Dianne has coached over many years and then had a break for a while where she raised 2 sons as well as studied and worked as a Vet Nurse for 15 years. She is now coaching at Gidgegannup Horse and Pony Club as Chief Coach and enjoys the challenges that come with that position.

Dianne is a PCANCAS Pony Club Level 1 Coach. An examiner for C, C* & K certificates. A Coach Educator and examiner for Preliminary and Level 1 Coaches.



NYRELL WILLIAMS - MC

Nyrell has been involved with Pony Club since 1990 at Riverside Park. She was initially involved in coaching then in 1997 became a committee member. During this time Nyrell held the positions of Treasurer for two years, Chief Coach for a total 10 years, Secretary for two years and general committee for the balance until a couple of years ago when she fell back to just enjoying coaching at the Club.

Nyrell has also been involved with the Metropolitan Zone from 1997 for many years and held the positions of C*/K Co-ordinator and Zone Coach Co-ordinator.

Appointed to the Pony Club WA State Coaching Panel in 2008, Nyrell held the position of Chairperson from 2016-2019. She has also held the positions of State C* Co-ordinator, State NCAS Coach Co-ordinator and Board Representative. Nyrell is a NCAS PC Level 1 Coach, Proficiency Level Examiner for C, C Star/K and NCAS Coach Assessor and an Accredited Gear Checker.



JILL KESSELL

I started riding at 11, on a camp in Serpentine, and then moved to Darwin where I got my first horse at 14. He was a station horse and I now realise how tolerant of me he was! I lost him to Cyclone Tracy, along with most of the other horses in my Pony Club.

I moved back to Perth to finish high school, and rode sporadically for many years, either on borrowed horses or at riding schools. I finally got another horse when I was in my 40s, and joined Kelmscott Adult Riding Club. I undertook the training to become an EA coach, and then dressage judge, and began coaching at Wallangarra RPC in 2014. I took on the chief instructor role around 2018, and have been there ever since. I became a PCA accredited coach several years ago, and also coach at Eq Cetera

therapeutic riding centre. Horses have given me a life long interest, some wonderful friends and many happy memories, and I love sharing my knowledge with the next generation of riders.



DONNA BLACK

Our family has been a member of Wallangarra Pony Club since 2016. I did not come from a horsey background but suddenly had four children riding horses so decided to get involved and learn. I have been on the Wallangarra committee and the rally co-ordinator for 8 years as well as being on the State Tetrathlon committee for 3 years. Pony club provides an encouraging community and without well run efficient rallies and a supportive pony club environment our riders couldn't learn the level of horsemastership or build the long lasting friendships that pony club nurtures.



TANYA APPLEBY



SALLY WISEMAN

Sally Wiseman joined the team in 2021. She has over 20 years' experience in senior leadership roles within large, consumer-facing multi-national retail, travel, sporting and government organisations. She was the campaign manager for the Gold Coast 2008 Commonwealth Games. She has an undergraduate degree in Bachelor of Business and is part-way through her MBA at Griffith University.

Her passion for horses started in 1984, when Sally joined Mudgeeraba Pony Club in Queensland at eight years of age, riding over an hour each way with her friends to and from each rally day through the local farms. She is a PCANCAS coach and now the Chief Instructor of Mudgeeraba Pony Club. Her two daughters enjoy Pony Club too, mostly riding in gymkhanas, combined training, showjumping and eventing – like their mother who loved eventing too.

Sally is passionate about encouraging children from all backgrounds to enjoy equestrian sport through joining like-minded friends in the grass roots organisation of Pony Club, and sharing the benefits to riders, parents, carers and volunteers.

Book Sales and Merchandise

| DISPLAY | CONTACT/ TOPIC | COST |
|--------------------------|---------------------------------------------------------------|---------------|
| | Beginning Coaching | \$27.50 |
| | Guidelines for Coaching Lead Rein Riders | \$8.00 |
| | E Proficiency Resource Manual for Coaches | \$20.00 |
| | Horse Shoeing Notes | \$5.00 |
| | Horses Hate Surprise Parties | \$29.95 |
| | Horsemastership for the Australian Rider | \$20.00 |
| | Landcare Certificate Workbooks (Set of 3) | \$5.00 |
| | More Fun in Pony Club | \$13.00 |
| | Nadine Mereweather – Ground Plan Lessons | \$20.00 |
| | NZ Pony Club Manual 1 | \$40.00 |
| | Parents, Ponies and their Princesses | \$22.00 |
| | PCA NCAS Level 1 Coaching Certificate Workbook | \$35.00 |
| | Pony Club WA 2022 Gear Checking Guidelines to National Manual | \$40.00 |
| | Prince Phillip Mounted Games Coaching Guide | \$15.00 |
| | Teaching First Ridden and Lead Rein Riders | \$15.00 |
| | Training Young Horses | \$15.00 |
| | Surviving the Unexpected | \$25.00 |
| DVD | Zoe Harrison – Riding Terminology | \$40.00 |
| | Zoe Harrison – Exercises for the Rider | \$40.00 |
| | Dwight Pedlow – School Figures and Commands | \$40.00 |
| Pony Club WA Merchandise | Pony Club WA Polo Shirt – Short Sleeve | \$46.75 -\$55 |
| | Pony Club WA Coaching Polo Shirt – Long Sleeve | \$60.00 |
| | Pony Club WA Caps | \$15.00 |

Please note:

Club and individual book orders placed prior to the event will be available for collection at the event. Orders placed over the event weekend will not be available for collection at the event and will need to be collected from the Pony Club WA Offices during the working week. Orders can also be posted; however, postage and handling fees will apply.



Coaching and Officials Events Calendar



Stay up to date with local Coaching Clinics and Refreshers by viewing our **NEW** Coaching and Officials Events Calendar.

The Calendar gives you access to a range of courses, development workshops and events held by Pony Club WA to further your skills and training as a Coach or Official in Western Australia.

Visit our **NEW** Coaching and Officials Events Calendar here:

<https://www.ponyclubwa.asn.au/coaching-calendar/>

You can find all relevant Coaching resources on the Pony Club WA Website.

COACH

- State Coaching Panel
- State Coaching School
- State Coaching Panel Webinar Series
- Coaching Accreditations
- Accredited Pony Club Prelim/Level 1 Coaches
- Coach Resources
- Examiner Accreditations
- Coaches Top Up Insurance
- Visiting Commissioners

GEAR CHECKING

- GCAP
- Accreditations

<https://www.ponyclubwa.asn.au/coaches-and-officials/>

SPORTS OFFICIALS

- About
- Active Riding Officials
- Dressage Officials
- Eventing Officials
- Eventing Officials Development
- Hickstead/Hunter Trials Officials
- Showjumping Officials

SPORT OFFICIALS PAYMENTS

- Payments

Pony Club Australia Academy

The Pony Club Australia Academy is designed to expand and enhance the certificate program by supporting the coaching and certificate manual systems with online content and activities.

This enables the use of digital media resources such as YouTube videos, audio clips, online games, interactive presentations, quizzes and online certificate testing/exams.

Each course is split into sections in line with the Certificate Manuals, allowing easy navigation between them, as well as systematic and trackable progress through the sections.

- Interactive games are used to support the learning materials and engage users, making the experience more fun and memorable.
- Curated video clips from horse experts around the world are also used to demonstrate important practical information.
- Multiple choice quizzes, fill in the blanks, true or false questions and drag-and-drop are just some of the types of activities used throughout each course.
- Interactive games include hangman, crosswords, word searches, card pairs and even a question-based “space invaders” style game.
- Written tests or exams can now be completed online and assessed by your nominated assessor to finalise each certificate.



Welcome to the Pony Club Australia Academy Certificates!

The Pony Club Australia Syllabus of Instruction is built on certificate levels that enable the rider to continuously develop their skills in riding, horse care and citizenship.

Members are encouraged to move through the certificates at their own pace, but in the following order:

- The **E Certificate** is optional, but recommended.
- The **D, D* and C Certificates** are pre-requisites for the higher level certificates.
- The **C Certificate** is recommended as the baseline for all members and will ensure that the rider has a good foundation of skill, safety, and horsemanship.



Certificate E

is the first of the [Pony Club Australia Certificates](#), and it will introduce you to the syllabus of learning all about horses.



Certificate D

builds on the information you learned in Certificate E. That is to help you remember them and move on to the next step.



Certificate D*

will help you improve your riding skills. You'll also find out how your horse learns and how to look after him in the best possible way. Good riders never stop learning so don't be afraid to ask questions or for extra help.



Certificate C. Here you will gain more knowledge of horse behaviour and learning, as well as some extra knowledge of handling, riding and caring for your horse.

Easy 6 Step process to register for Pony Club Australia Academy, click the link below:

[PCA ACADEMY | Pony Club Australia](#)

[illegible]